

Great gift for family & friends



Thank you for choosing our red light therapy belt.
We really appreciate your support and hope you'll enjoy this device.



Red Light Therapy Belt User Manual



Thank you for purchasing our products, please read the manual before use.

About the red light therapy belt

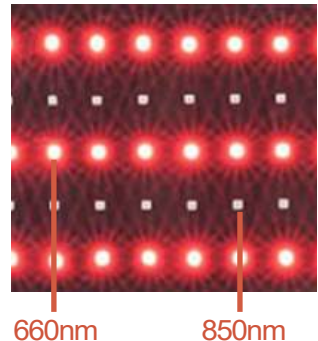
The red light device uses a combination of red 660nm and infrared 850nm leds that provides the ideal wavelengths found in the scientific research during last three decades. In this red light therapy belt, there are 63pcs 660nm leds and 42pcs 850nm leds.

660nm of red light

This light can be seen by eyes and targets skin cells.

850nm of near infrared light

This light cannot be seen by eyes and targets deep tissue.








Benefits backed by science

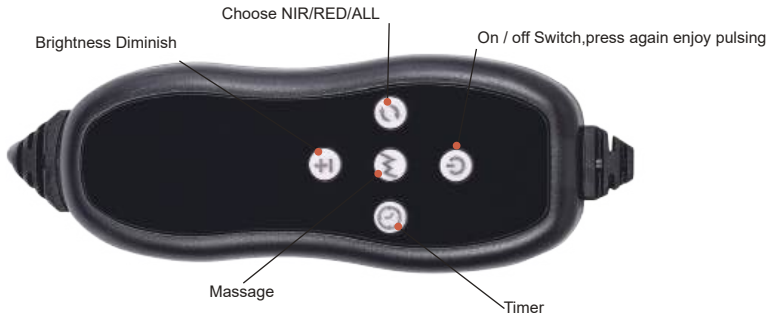
Research shows that the wavelengths in the spectrum of 660-900nm show optimal biological responses.

- Muscle and Joint pain
- Speed wound healing
- Relieve Fatigue
- Enhance blood circulation
- Aging spots & Wrinkle removal
- Increase collagen
- Weight loss
- Anti-inflammatory
- Decreases pain

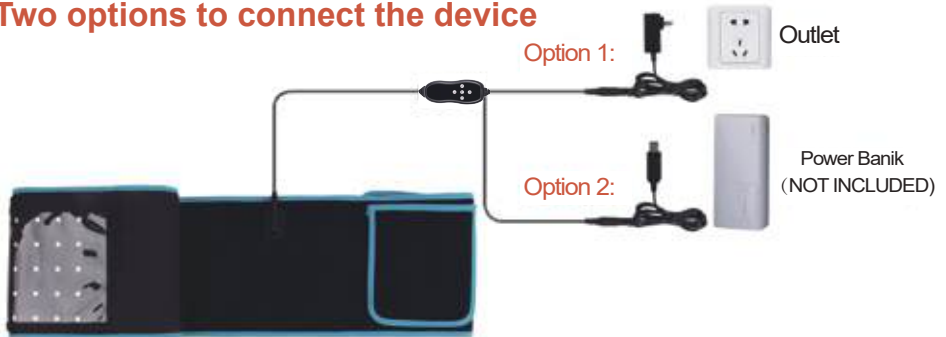
How to use?

2. Plug into the AC socket and all led diode on. Or use a power bank to power the device.
It is suggested to use output equal or over 5V 2A power bank.
3. Place anywhere you suffer the joints pain.
4. Select options:
 - 1) Press  button to turn on the belt, if want pulsing function, press again;
 - 2) Press  button to adjust the brightness;
 - 3) Press  button if want massage function;
 - 4) Press  button to set the timer;
 - 5) Press  button to choose NIR/RED/ALL

Control panel



Two options to connect the device



Specification

SIZE	496 IN 7.08 IN
COLOR	BLACK & BLUE
MATERIAL	NEOPRENE
POWNER	18W
LED QTY	105PCS
TIMER	30 MINUTES
LIFESPAN	ONVER 50.000 HOURS

Package includes

- 1 x Therapy Belt
- 1 x Adapter
- 1 x Control Line
- 1 x USB Line
- 1 x User Manual

Notice

Even though this technology doesn't have any side effects, we suggest to take the following precautions:

- ▶ This device is not waterproof.
- ▶ This device is not suitable for children and pregnant woman.
- ▶ Do not use this device exceed 30 minutes each time.
- ▶ Do not stare at the light directly.
- ▶ It's NoT recommend to use it when sleeping.
- ▶ Please storage it away from children.

Application

Here are some examples of how you can use the red light device. You and your pets can enjoy the red light in different ways and different places.





family



Office



Hospital



fitness



pet